

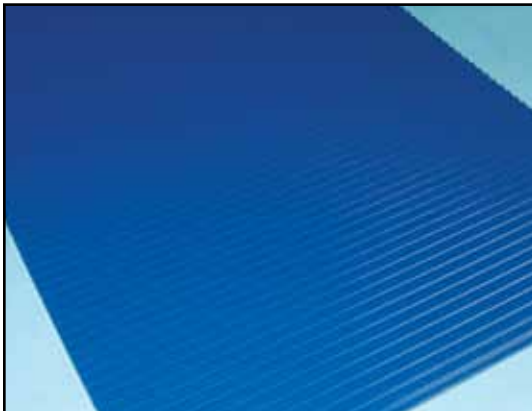
POWERING GLOBAL INDUSTRY



FDA  
APPROVED  
ISO-9000  
CERTIFIED



**RULTRANS OFFERS A WIDE ARRAY OF CONVEYOR BELTING  
PVC • POLYURETHANE • FABRIC**



- Multiple surface patterns available with widths up to 3 meters
- Whisper weave fabrics, anti-static & flame retardant
- FDA-approved & ISO-9000 Certified

 **Jason Industrial Inc.®**  
**A MEGADYNE GROUP CO.**

340 Kaplan Drive • Fairfield, NJ 07004-6004  
Distribution Center • Carol Stream, IL 60188

**1-800-527-1247**

**RULTRANS**  
A MEGADYNE GROUP CO.



**LIGHTWEIGHT  
CONVEYOR BELTING**

# LIGHTWEIGHT CONVEYOR BELTING PART NUMBER DESIGNATIONS

PVCEXCON							
3	F/18	W60	V10/V20	AS	AR	FA	ATEX
↓	↓	↓	↓	↓	↓	↓	↓
Number of Fabric Piles	Type of Fabric	N/mm at 1% Elongation	Color	Total Thickness	Bottom Cover Material or Pattern	Top Cover Material or Pattern	Additional Properties

TYPE OF COVER	
<b>PVCCON</b>	PVC
<b>PVCEXCON</b>	PVC w/oil resistance
<b>FABCON</b>	Fabric
<b>PUCON</b>	Thermoplastic Polyurethane
<b>PESCON</b>	Copolyester Thermoplastic
<b>POLYCON</b>	Polyolefin
<b>FELTCON</b>	Felt
<b>SILCON</b>	Silicone
<b>NITCON</b>	Synthetic Rubber

TYPE OF FABRIC	
<b>LR</b>	Light Rigid
<b>R</b>	Rigid
<b>RR</b>	Extra Rigid
<b>F</b>	Flexible
<b>C</b>	Cotton 100%
<b>RC</b>	Polyester - Cotton Rigid
<b>FC</b>	Polyester - Cotton Flexible
<b>FX</b>	Whisper Flexible
<b>RX</b>	Whisper Rigid
<b>RH</b>	Rigid High Power
<b>FH</b>	Flexible High Power
<b>K</b>	Felt

COLOR	
<b>W</b>	White
<b>LB</b>	Light Blue
<b>AG</b>	Apple Green
<b>PG</b>	Petrol Green
<b>DG</b>	Dark Green
<b>GR</b>	Gray
<b>B</b>	Black
<b>OR</b>	Orange
<b>HN</b>	Honey

TOP & BOTTOM SURFACE	
<b>00</b>	Bare
<b>U0</b>	PU Impregnated
<b>V0</b>	PVC Impregnated
<b>E0</b>	Polyester Impregnated
<b>V...</b>	PVC Coated
<b>U...</b>	PU Coated
<b>E...</b>	Polyester Coated
<b>Y...</b>	Polyolefin
<b>R...</b>	Rubber

SURFACE PATTERNS	
<b>P1</b>	Negative Pyramid
<b>P2</b>	Nipple
<b>P5</b>	Fabric Structure
<b>P6</b>	Saw Tooth
<b>P7</b>	Basket Weave
<b>P8</b>	Supergrip
<b>P9</b>	Ribbed
<b>P10</b>	Drop
<b>P12</b>	Rough
<b>P14</b>	Low Supergrip
<b>P15</b>	Silky Surface
<b>P16</b>	Coarse Texture

ADDITIONAL PROPERTIES	
<b>MT</b>	Matt
<b>AS</b>	Antistatic
<b>AR</b>	Abrasion Resistant
<b>CR</b>	Cut Resistant
<b>FA</b>	FDA Approved
<b>FR</b>	Flame Retardant
<b>TR</b>	Tear Resistant
<b>ATEX</b>	ATEX Certified
<b>PR</b>	Pyrolysis Resistant



Jason Industrial's Carol Stream, IL distribution center houses a new 3 meter slitter for full or half rolls, as well as custom size belt needs.

Now that Rultrans is part of the Megadyne group, Jason Industrial is stocking a complete line of **lightweight conveyor belting** in its Carol Stream, Illinois distribution center. A new three meter slitter allows for full or half roll orders, as well as custom size belts for your specific needs.

Reflecting the needs of distributors, our inventory includes a variety of different cover patterns, and ranges from single ply polyurethane covered belts for the food industry to PVC belts for general conveying.



Rultrans **lightweight conveyor belting** is produced with high strength, low stretch polyester fabrics. Also in stock are bare x bare styles, some of which contain cotton. Our fabric offering ranges from extra rigid to flexible weft, while allowing the belts to operate on very small diameter pulleys. These belts are made to the highest quality standards and consistency is guaranteed.

**Belts displayed in this brochure reflect in-stock standard constructions, but many more specifications are available.**

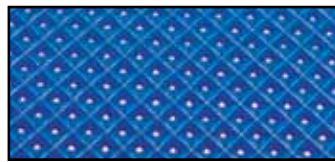
**For Conveyor Belt Customer Service, Call 1-800-527-1247**

## PVCEXCON

Made with a PVC compound that is resistant to mineral and vegetable oils, as well as animal fats. The hardness of the compound may also be varied and the belts may have a cover on one or both sides. All belts in this family are FDA-approved and are available in blue or white.

**COVER**

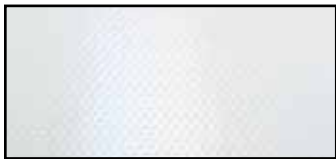
**BACK**



**PVCEXCON 2R/12 LB30 P1/V07 FA**



**PVCEXCON 2R/12 LB50 00/P6 FA**



**PVCEXCON 2R/12 W20 00/V05 AS FA**



**PVCEXCON 2R/12 W27 00/P2 AS FA**



**PVCEXCON 2R/12 W30 P1/V07 AS FA**



**PVCEXCON 2F/12 W26 00/V10 AS FA**

A partial list of other thicknesses, patterns, colors and specifications in the **PVCEXCON** family include:

- PVCEXCON 2R/12 W27 00/V11 AS FA**
- PVCEXCON 3R/16 W38 00/V11 AS FA**
- PVCEXCON 2R/12 W27 00/P1 AS FA**
- PVCEXCON 2R/12 W54 00/P8 FA**
- PVCEXCON 2R/12 LB20 00/V05 FA**
- PVCEXCON 3F/24 W60 V07/V20 AS AR FA FR ATEX**

## PVCCON

Available with a good, general purpose compound in multiple colors and thicknesses. Compound hardness may be varied to suit your particular application. May be supplied with a smooth cover on one or both sides and is available in a variety of patterns. Apple Green belts in this family are also FDA-approved.

**COVER**

**BACK**



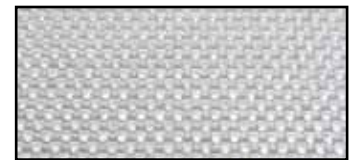
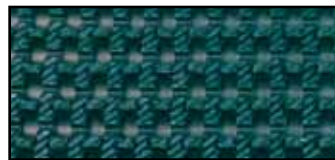
**PVCCON 2R/12 AG20 00/V05 AS FA**



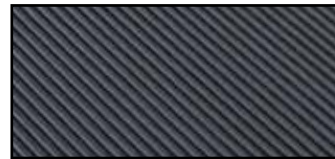
**PVCCON 2R/12 PG20 00/V05 AS**



**PVCCON 2R-RX/14 PG23 00/P7 AS**



**PVCCON 2R/12 PG54 00/P8**



**PVCCON 2R-RX/14 B30 00/P9 AS FR**



**PVCCON 2R/12 B18 00/V04 MT AS**

A partial list of other thicknesses, patterns, colors and specifications in the **PVCCON** family include:

- PVCCON 2R/12 PG25 00/V09 AS**
- PVCCON 2R/12 PG27 00/V11 AS**
- PVCCON 2F/12 PG27 P1/V05 AS**
- PVCCON 2R-RX/14 PG30 00/P9 AS**
- PVCCON 2R/12 B54 00/P8 AS**
- PVCCON 2R/12 PG30 P1/V07 AS**
- PVCCON 2R-RX/14 B21 00/V05 MT AS FR**

**For Conveyor Belt Customer Service, Call 1-800-527-1247**

## FABCON

Made with bare fabric both sides or fabric that is PVC or PU impregnated. Both cotton and polyester fabrics are available in varying degrees of rigidity. Belts in this family have excellent release properties, high temperature resistance and a low co-efficient of friction.

**COVER**

**BACK**



**FABCON 1FC/4 W12 V0/V0 FA**



**FABCON 2LR/5 W10 U0/U0 AS FA**



**FABCON 2FC/8 W18 00/00 FA**



**FABCON 2LR/8 W18 00/00 FA**



**FABCON 2RC/6 W24 00/00 FA**

A partial list of other thicknesses, patterns, colors and specifications in the **FABCON** family include:

**FABCON 3R/15 AG35 V0/U0 AS**  
**FABCON 2R-RX/14 W15 00/00 AS FA**  
**FABCON 2RC-R/8 W19 00/00 FA**  
**FABCON 3FC/8 W30 00/00 FA**

## PUCON

Made with polyurethane cover on one side, these belts perform well at high temperatures, have excellent release properties and are highly abrasion resistant. These belts carry the FDA approval and are available in a variety of colors.

**COVER**

**BACK**



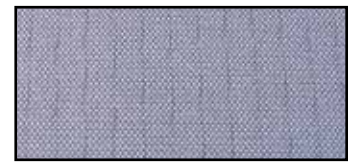
**PUCON 1LR/4 W08 U0/U03 MT AS AR FA**



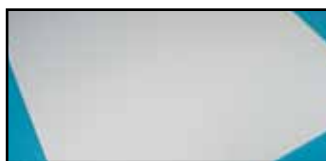
**PUCON 2LR/8 DG13 U0/U035 MT AS AR FA**



**PUCON 1LR/4 W11 U0/U05 MT AS AR FA**



**PUCON 2LR/8 LB14 U0/U035 MT AS AR FA**



**PUCON 2LR/8 W13 U0/U035 MT AS AR FA**

A partial list of other thicknesses, patterns, colors and specifications in the **PUCON** family include:

**PUCON 2LR/8 W15 U0/P1 AS AR FA**  
**PUCON 1LR/4 W14 U0/P1 AR FA**  
**PUCON 2LR/8 LB16 U0/P1 AS AR FA**  
**PUCON 1RH/20 W18 U0/U03 MT AS AR FA**



[rultrans.com](http://rultrans.com)



[jasonindustrial.com](http://jasonindustrial.com)

**For Conveyor Belt  
 Customer Service  
 1-800-527-1247**